



Owner's Handbook
CX-Series MP Control Console for
Baseball • Softball
Software Version 4.0.2

Type

BASEBALL_1

Options

0C00

Version

CXvF / CX_402_v1.HEX

The above information
should match the label
on the bottom of your
control console.



The purpose of this handbook is to explain how to use and maintain the Electro-Mech MP-Style scoreboard control console for baseball and softball. The explanations and examples are based on the CX-Series console driver hardware loaded with software version 4.0.2. Earlier versions of our hardware and software behave similarly, but not identically in all situations.

Scoreboards supported by this combination of hardware and software include these Electro-Mech models:

**LX1130
LX1132
LX1136**

**LX1160
LX1162
LX1166**

In addition, the following models, which usually ship with our simplified 15-key control console, are also supported:

LX1020, LX1030, LX1050, LX1060, LX1062, LX1070, LX1240, LX1250, LX1260, and LX1340.

Table of Contents

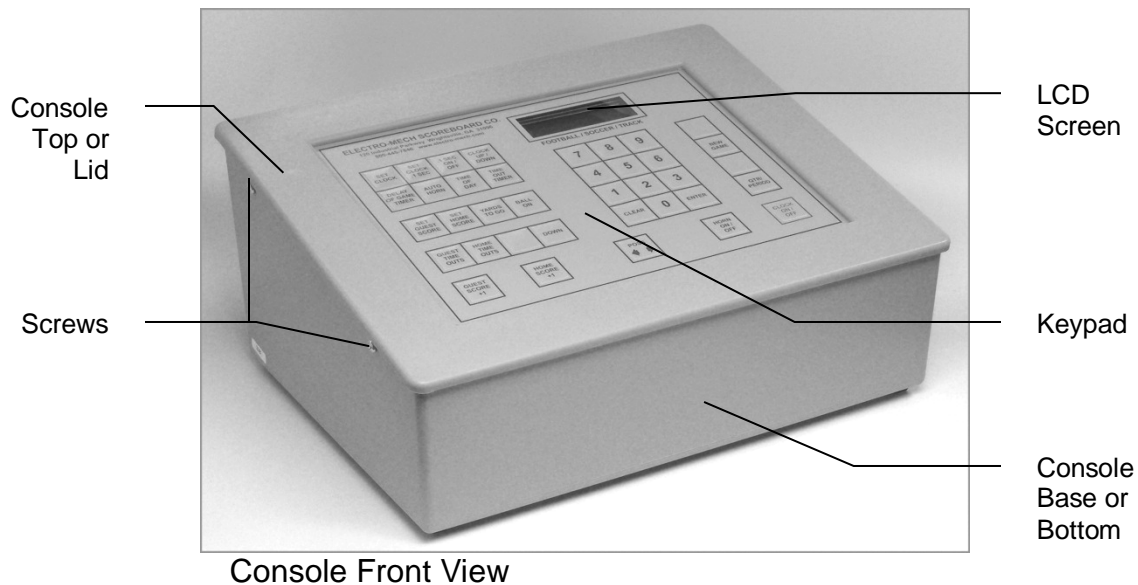
| | |
|---|----|
| Seven Ways to Stay Safe and Make Your Console Last Longer | 3 |
| Console Parts and Accessories | 4 |
| Hooking Up and Powering Up the Console and Accessories | 6 |
| Control Console Initialization | 7 |
| Control Console LCD Screen | 9 |
| Key-By-Key Operation | 10 |
| "New Game" Features -- Including Electronic Team Name Setup | 14 |
| Handheld Clock Start / Stop Switch..... | 19 |
| Control Console Power Down and Storage..... | 20 |
| Jumper Settings | 21 |

Seven Ways to Stay Safe and Make Your Console Last Longer

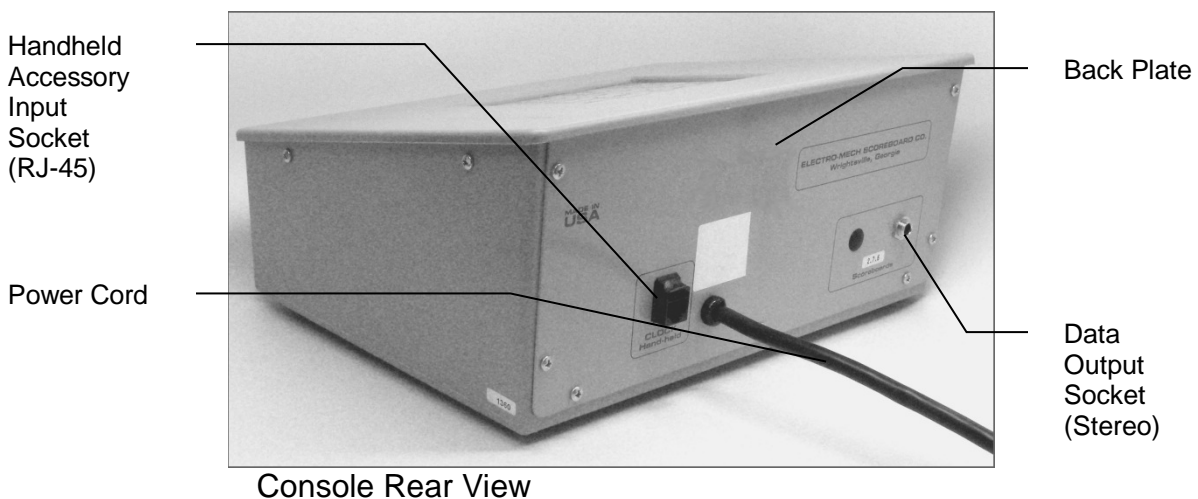
- 1 - Don't remove the grounding pin from the power cord.** It's there to help keep you from getting shocked. If your receptacle only handles two-pronged power cords then your wiring was probably installed sometime before President Hoover left office. It's time to upgrade.
- 2 - Keep your console dry.** We've designed our consoles with outdoor activities in mind, but find some shelter if it is raining. The box is not waterproof. Drinks spilled over the keypad can lead to trouble too.
- 3 - Unplug both the power and data cables when you are not using the console.** Noise over these cables -- either from lightning, glitches in the power line, or some other accident -- can damage the console. Leaving the console connected 24-7 just increases your risk of getting it fried.
- 4 - Store the console in a clean, dry, secure area.** Leave it where somebody can kick it, drop it, pile stuff on top of it, or steal it, and you can expect your console will get kicked, dropped, piled on, and stolen. See also the "keep your console dry" tip above. Neither sprinkler systems nor natural sources of precipitation are beneficial to your control console.
- 5 - If you must open the console box, unplug the power and data cables.** Yes, it is possible to get shocked if you go poking around inside the console.
- 6 - Don't plug something into the console that doesn't belong there.** The stereo connector in the back plate of the console is the same kind used by audio equipment. The RJ-45 connector for the hand-held clock switch is the same type you often see in wired computer networks. Accidentally plugging an audio amplifier or Ethernet access point into your scoreboard control console can cause problems - both to your console and to your audio and networking equipment. A common mistake we see our customers make is to accidentally plug public address equipment into the junction box that leads to the scoreboard. This often fries components in the scoreboard.
- 7 - Check out your equipment before game day.** We're always happy to answer questions, walk you through solutions, repair damage, or send replacement parts. But if your game starts in ten minutes, there is often not much we can do to help you. Make sure your scoreboard is in good working order a few days before the game so that, however unlikely the chance of a problem, there will be time to solve it.

Console Parts and Accessories

This is a generic set of photos identifying parts of the console and accessories. You should receive a packing slip or other paperwork with your order that tells specifically what parts you are supposed to have. Your configuration may be different.



Console Front View



Console Rear View



Handheld Clock
Start / Stop Switch



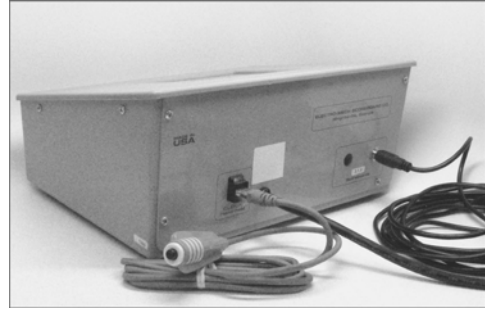
Stereo Data Cable



Junction Box (with coil of data cable)

Hooking Up and Powering Up the Console and Accessories

- 1 - Apply power to the scoreboard.
- 2 - Place the console on a sturdy desk or table so that you have a clear view of the game's action as well as the console's keypad and LCD screen. You may hold the console in your lap, if you find it comfortable that way.
- 3 - Attach hand-held devices. You may have an external switch to start and stop the Game Clock on the scoreboard. This corded switch plugs into the RJ-45 style socket on the back of the console.
- 4 - Attach one end of the stereo data cable to the data output connector on the back plate of the console.
- 5 - Attach the other end of the stereo data cable to the junction box. If you have the ScoreLink wireless RF system, refer to the ScoreLink owner's handbook for details.
- 6 - Plug in the console power cable to a standard electrical outlet.



About one out of every few hundred customers asks us the question, "How do you turn the console on and off?" There is no power button on the console. If it's plugged in, it's on. The logic here is that, for most installations, the scoreboard is not used very often. During the down time, the console needs to be disconnected from the scoreboard and from power to prevent damage from line noise and power surges. A power switch would discourage that good habit and provide a false sense of security.

Likewise, the scoreboard should be disconnected from power when not in use. Therefore the console has no means of turning the scoreboard on or off. However, a freshly powered on scoreboard will display no information until it receives a good signal from the control console. So in order to "turn on" the scoreboard display, you have to power up and connect the control console.

Control Console Initialization

Be quick. You only have about three seconds to see the splash screen when your console powers up. It should look like this:

| |
|------------------|
| ELECTRO-MECH 402 |
| BASEBALL_1 0C00 |

The splash screen is telling you four things:

- The software author -- ELECTRO-MECH
- The software version -- 402
- The selected scoreboard type -- BASEBALL_1
- The selected option jumpers -- C = 2-Digit Game Clock

This information is important for diagnostics, and you can get back to this splash screen by pressing [NEW GAME] [1] [ENTER] on the keypad. If you see something different on your display, either this is the wrong owner's handbook for you or your console is not configured to the expected standard.

If your console has data from the previous game, you will be prompted to restore that data. Press [1] [ENTER] to reload the old Scores and other information. Press [0] [ENTER] to clear out memory and start over fresh. If you do not respond to this prompt, the console will restore the previous game data automatically after a few seconds.

| |
|----------------|
| RESTORE GAME? |
| 1=YES 0=NO <1> |

After the splash screen clears, you will see the main scoreboard information screen:

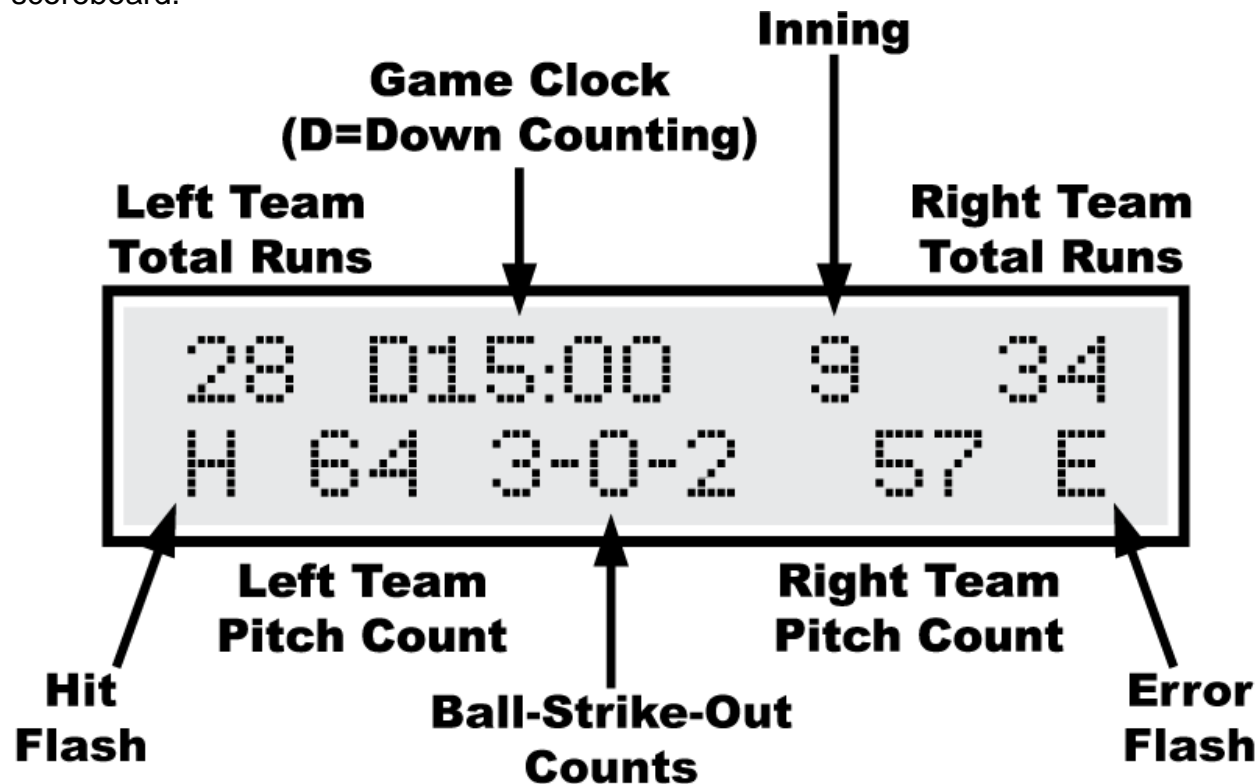
| | | | |
|----|--------|----|----|
| 00 | D12:00 | - | 00 |
| 00 | 0-0-0 | 00 | |

The scoreboard will display the following information (some scoreboard models do not displays all the functions listed):

- Left (Guest) Total Runs -- 0
- Home (Home) Total Runs -- 0
- Inning -- Blank (0 on some models)
- Ball -- Blank
- Strike -- Blank
- Out -- Blank
- Left (Guest) At Bat Indicator -- Blank
- Right (Home) At Bat Indicator -- Blank
- Left (Guest) Pitch Count -- 0
- Right (Home) Pitch Count -- 0
- Single Pitch Count -- 0
- Hit Indicator -- Blank
- Error Indicator -- Blank
- Game Clock -- 12 (minutes)

Control Console LCD Screen

The LCD screen primarily shows you the main scoreboard data screen. Information shown here corresponds closely (but not exactly) to information shown on the scoreboard.




Numbers that display as "0" on the LCD may display as blanks on the scoreboard. For instance, when the Strike Count reads "0" on the control console, the display on the scoreboard will be blank. Some scoreboard models do not include features like Pitch Count or Time, so, of course, the scoreboard will not match all the information on the LCD in those cases.

The illustration above refers to "Left Team" and "Right Team" to be as generic as possible. In most cases, the Left side is for the Guest team and the Right side is for the Home team. Some scoreboard/console pairs ship with the positions swapped.

Key-By-Key Operation

This section will provide a key-by-key explanation of the console features. Use the [0] ... [9] buttons to respond to prompts, pressing [ENTER] to complete or confirm your response. The [CLEAR] button backs you out of a prompt without making changes.

| | | | | | | | |
|--|------------------------|------------------------|------------------------|--|-----------|-------------------------|----------------------|
|  | | | | <div style="border: 1px solid black; width: 150px; height: 50px; margin: 0 auto;"></div> <p style="text-align: center; margin: 0;">BASEBALL • SOFTBALL</p> | | | |
| SET CLOCK | SET CLOCK .1 SEC | .1 SEC ON / OFF | CLOCK UP / DOWN | | | | |
| | AUTO HORN | TIME OF DAY | TIME OUT TIMER | 7 ABC | 8 DEF | 9 GHI | TEAM AT BAT |
| | | | | 4 JKL | 5 MNO | 6 PQR | NEW GAME |
| BALL +1 | STRIKE +1 | OUT +1 | SET PITCH COUNTS | 1 STU | 2 VWX | 3 YZ | BATTER NUMBER |
| SET GUEST SCORE | SET HOME SCORE | GUEST PITCHES +1 | HOME PITCHES +1 | CLEAR FLASH HIT | 0 &-.! | ENTER FLASH ERROR | ASSIGN ERROR |
| GUEST SCORE +1 | HOME SCORE +1 | | | INNING +1 | HORN | | CLOCK ON / OFF |
| <p style="font-size: small; margin: 0;">Electro-Mech Scoreboard Co. • 72 Industrial Blvd. • Wrightsville, GA 31096 • www.electro-mech.com • 800-445-7846</p> | | | | | | | |

[SET CLOCK] - Available only when the Game Clock is NOT running. This button allows the operator to edit the time shown on the Game Clock. Pressing the button brings up an input prompt on the second line of the LCD screen.

| |
|-----------------|
| SET CLK <12:00> |
|-----------------|

To set the time to 5:30, press [SET CLOCK] [5] [3] [0] [ENTER]. The console rejects time entries with a Seconds part greater than 59.

This function prompts for Minutes and Second. If you have a scoreboard with a 2-Digit Clock display, the Seconds will show only during the final minute of a countdown.

[SET CLOCK .1 SEC] - Not used for this configuration of the control console.

[.1 SEC ON / OFF] - Not used for this configuration of the control console.

[CLOCK UP / DOWN] - Available only when the Game Clock is NOT running. This button allows the operator to change the direction of the Game Clock. By default the Game Clock counts down until reaching 0:00. The operator may set the Game Clock to count up starting from any valid time. Pressing the button brings up a two-line prompt on the LCD screen.

| |
|------------------|
| COUNT UP OR DOWN |
| 1=UP 0=DOWN <0> |

To count up, press [CLOCK UP / DOWN] [1] [ENTER]. The Game Clock on the LCD screen will show a "U" prefix to indicate Up Counting Mode. A "D" is for Down Counting Mode.

In up-counting mode, after 99:59, the Time cycles to 0:00.

[AUTO HORN] - Allows the operator to set the behavior of the Horn. By default, the Main Horn attached to the scoreboard is activated for about four seconds at the end of each Period. That is, when the Game Clock counts down to 0:00, the Horn blows. You can turn off this feature by using the [AUTO HORN] button. Pressing it brings up this prompt:

| |
|------------------|
| AT END OF PERIOD |
| 1=AUTO 0=OFF <1> |

To turn off the Automatic Horn at the End of Period, press [0] [ENTER] at this prompt. Of course, baseball scoreboards do not generally include Horns, so this feature is there only to accommodate the odd circumstance of a Horn added to a baseball scoreboard.

[TIME OF DAY] - Not used for this configuration of the control console.

[TIME OUT TIMER] - Not used for this configuration of the control console.

[BALL + 1] - Increments the Ball Count by one.

[STRIKE + 1] - Increments the Strike Count by one.

[OUT + 1] - Increments the Out Count by one.

[SET PITCH COUNTS] - Allows the operator to directly set or edit the Pitch Counts for both Teams. At the first prompt you may change the Pitch Count for the Team displayed on the Left side of the scoreboard/LCD (usually the Guest Team).

PITCH CNT L<000>

At the second prompt you may change the Pitch Count for the Team displayed on the Right side (usually the Home Team).

PITCH CNT R<000>

The Team At Bat function is tied to the Pitch Count function for scoreboards that display only one set of Pitch Count digits. For these scoreboards, Pitch Count is shown only for the Team NOT currently At Bat. So the [TEAM AT BAT] button toggles between the two Pitch Counts.

[SET GUEST SCORE] - Allows the operator to directly set or edit the Guest Score. Pressing the button brings up an input prompt on the second line of the LCD screen.

SET SCORE <00>

To set the Guest Score to 35, press [SET GUEST SCORE] [3] [5] [ENTER].

Some scoreboard/console pairs ship with the positions of the Guest and Home keys swapped.

[SET HOME SCORE] - Allows the operator to directly set or edit the Home Score. Pressing the button brings up an input prompt on the second line of the LCD screen.

SET SCORE <00>

To set the Home Score to 42, press [SET HOME SCORE] [4] [2] [ENTER].

Some scoreboard/console pairs ship with the positions of the Guest and Home keys swapped.

[GUEST PITCHES +1] - Allows the operator to increment the Guest Pitch Count by one.

[HOME PITCHES +1] - Allows the operator to increment the Home Pitch Count by one.

[GUEST SCORE +1] - Allows the operator to increment the Guest Score by one.

[HOME SCORE +1] - Allows the operator to increment the Home Score by one.

[INNING +1] - Allows the operator to increment the Inning display by one.

[HORN] - Sounds the Horn for a two-second burst.

[CLOCK ON / OFF] - Starts and stops the Game Clock.

[CLEAR / FLASH HIT] - Flashes the Hit Indicator four times, but does NOT affect the Total Hits for either Team. This button is also used while entering numerical data to exit the function without change.

[ENTER / FLASH ERROR] - Flashes the Error Indicator four times, but does NOT affect the Total Errors for either Team. This button is also used while entering numerical data to confirm the entry and continue.

[ASSIGN ERROR] - Not used for this configuration of the control console.

[BATTER NUMBER] - Not used for this configuration of the control console.

[TEAM AT BAT] - This button toggles the Team At Bat Indicator from the Left (usually Guest) Team to the Right (usually Home) Team and back. You can see the results of pressing this button as a little arrow that appears on the left or right side of the LCD display on the control console. Most scoreboards do NOT have a corresponding indicator.

The Team At Bat function is tied to the Pitch Count function for scoreboards that display only one set of Pitch Count digits. For these scoreboards, Pitch Count is shown only for the Team NOT currently At Bat. So the [TEAM AT BAT] button toggles between the two Pitch Counts.

"New Game" Features -- Including Electronic Team Name Setup

[NEW GAME] - Available only when the Game Clock is NOT running. This button is the doorway to one fairly obvious feature and a few other hidden features. Pressing it brings up the following display:

| |
|----------------------|
| RESET SCOREBOARD |
| 1=YES 0=NO <0> |

Press [1] [ENTER] to reset all information to default values. For instance, Guest and Home Scores will be reset to 0.

In addition to this memory-clearing function, [NEW GAME] allows the operator to access other functions by entering other numbers at the prompt. These are listed below.

[NEW GAME] [2] - This sub-function controls the brightness (or dimming) of the scoreboard displays. You may set the brightness level to any value from 50% to 100% -- with 100% being the brightest.

| |
|--------------------|
| SET BRIGHTNESS |
| MAX=100% <100%> |

When you initially apply power to your scoreboard, the displays will always reset to 100% brightness. The scoreboard only receives a command to change brightness when you press [NEW GAME] [2] and enter a brightness value. So, if your scoreboard loses and regains power during a game, it will stay at 100% brightness until you walk through this function.

The brightness feature works on Electro-Mech LX-series scoreboards manufactured in 2012 or later. Older scoreboard models ignore the brightness command (and may flicker briefly in response).

[NEW GAME] [4] - This sub-function turns off all the scoreboard displays and shows the following message on the LCD screen:

| |
|------------------|
| ***BLANK TEST*** |
| **NEWGAME=EXIT** |

Blank Test Mode is a diagnostic feature that allows you to check for display circuits that are damaged in a way that prevents them from being turned off. If anything remains lit on the scoreboard when the console is in this mode, there is a hardware problem that should be resolved by contacting technical support.

Exit this mode by pressing [NEW GAME] again.

This is also a handy trick for blanking the scoreboard between games or whenever it is convenient. Just remember that the scoreboard is not truly off in this state. The electronic components are still energized.

[NEW GAME] [5] - This sub-function turns on all the scoreboard displays and shows the following message on the LCD screen:

| |
|------------------|
| ***LAMP TEST*** |
| **NEWGAME=EXIT** |

Lamp Test Mode is a diagnostic feature that allows you to check for display circuits that are damaged in a way that prevents them from being turned on. If anything is blank on the scoreboard when the console is in this mode, there is a hardware problem that should be resolved by contacting technical support. Horns are not supposed to sound in Lamp Test mode.

Exit this mode by pressing [NEW GAME] again.

[NEW GAME] [7] - This sub-function controls Electronic Team Name displays. If your scoreboard does not have Electronic Team Names (or if your scoreboard with ETNs was manufactured before 2011), the commands generated by this console feature will be ignored.

| |
|-----------------|
| SET TEAM NAMES? |
| 1=YES 0=NO <1> |

The ETN feature refers to the Team displayed on the left side of the scoreboard as Team 1; the Team on the right is Team 2.

| |
|--------|
| Team 1 |
| |

Setting the name is much like using the text features of a phone that assigns text characters to the number keys. Each time you press a number key repeatedly, the next character associated with that key appears on the LCD display. For instance, to enter the name "BEARS" you would press...

[7] [7] = B

[8] [8] = E

[7] = A

[6] [6] [6] = R

[1] = S

If you make a mistake entering a character, press the [CLEAR] key to back up one space. To complete the text entry, press [ENTER].

The next prompt allows you to choose the font:

| |
|-------------|
| SELECT FONT |
| 1-9 <3> |

As of this writing, there are three available fonts:

1=Condensed, 2=Regular, 3=Bold.

The number of letters your ETN can show depends on the font you choose as well as the size of your display.

After choosing a font style, you must select a justification:

| |
|-----------------|
| SELECT JUSTIFY |
| 1-L 2-C 3-R <2> |

Choose 1 for Left justification -- that is, the first letter in the Team Name will be flush with the left side of the display. Choose 2 for Center justification -- that is, the Team Name will be centered within the display. Choose 3 for Right justification -- that is, the last letter of the Team Name will be flush with the right side of the display.

The process is the same for Team 2. Note that font and justification settings for the two teams are independent of each other.

When your scoreboard with ETNs ships from Electro-Mech, the default Team Names are GUEST and HOME. Once you update the scoreboard with new Team Names, those names become the default that you will see when the scoreboard is

powered up. The console will only update the ETN displays when you work through the [NEW GAME] [7] function while the console is connected to the scoreboard. Because the text entry routine is designed to send characters to the scoreboard as you enter them in the console, it is not possible to program the Team Names "in advance" and update the scoreboard later.

Because of the occasional need to run a countdown time or other information on the Game Clock before the start of a game, you may be forced to program ETNs while the Game Clock is running. Since the [NEW GAME] button is disabled when the Game Clock runs, there is a "trick" to this. You must stop the Clock for the few seconds it takes to press [NEW GAME] [7]. Then you may start the Clock again. The Game Clock will continue to run while you update the ETNs.

There are a few ways to "turn off" the ETN displays. The [NEW GAME] [4] Blank Test Mode will blank the ETN displays (along with the rest of the scoreboard). Selecting the "Blank Others" option when entering Time of Day Mode will also blank the ETNs. In Practice Segment Timer Mode, the ETNs are blanked. If you disconnect the console while the ETNs are blank, reset the console, and then reconnect it to the scoreboard, the ETNs will remain blank. This is because the ETNs are only refreshed once, while the numeric scoreboard data is refreshed multiple times per second. You may restore blanked ETNs when the console is connected by entering and exiting "Lamp Test" Mode or "Blank Test" Mode or by resetting the console.

[NEW GAME] [8] - This sub-function configures the console to work with timing equipment provided by Precision Time Systems, Inc. You may confirm entry into this mode by typing [1] [ENTER] in response to this prompt:

| |
|----------------------|
| PRECISION TIME? |
| 1=YES 0=NO <0> |

The practical results of being in Precision Time Mode are 1) the [CLOCK ON / OFF] button is disabled, and 2) the Game Clock only runs when the console hardware reads a switch closure from an external clock switch. You can simulate the behavior of the Precision Time equipment by plugging an Electro-Mech Hand-Held Clock Start/Stop Switch into one of the connectors on the back of the console and holding down the button on the handheld device to start the Clock. The Clock on the LCD screen will have a "P" prefix to indicate Precision Time Mode. To exit Precision Time Mode, press [NEW GAME] [8] [0] [ENTER].

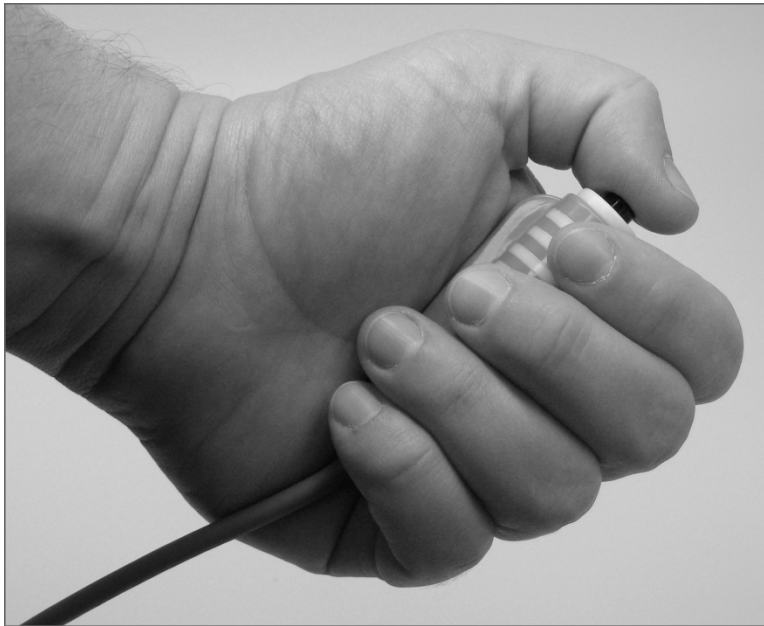
Summary of [NEW GAME] functions

- [0] = Exit
- [1] = Reset Game Data
- [2] = Brightness
- [3] = Not Used
- [4] = Blank Test
- [5] = Lamp Test
- [6] = Not Used
- [7] = Electronic Team Names
- [8] = Precision Time Mode
- [9] = Not Used

Long Press = Maintenance Sub-Menu

- [0] = Exit
- [1] = ScoreLink Signal Strength (not currently supported)
- [2] = AC Supply Voltage (not currently supported)
- [3] = Not Used
- [4] = Radar Gun (show data from gun)
- [5] = Not Used
- [6] = Not Used
- [7] = Not Used
- [8] = Not Used
- [9] = Not Used

Handheld Clock Start / Stop Switch



Unlike football and basketball, baseball rules don't require (as far as we know) a separate person to operate the Game Clock. But the feature is available if you want it. So you can purchase a handheld pendant-style switch that plugs into the back of the control console and allows a separate operator the ability to start and stop the Game Clock. The RJ-45 style connector at one end of the handheld unit's cable can plug into the matching socket on the back of the console. The pendant end fits nicely in your hand so that your thumb rests on the switch. Press the switch once to start the Clock. Press the switch again to stop the Clock.

Control Console Power Down and Storage

There is no "OFF" switch on the control console; nor is there a function on the console that turns the scoreboard off. The scoreboard should be disconnected from power when not in use. Electro-Mech recommends installing a disconnect switch for all permanently mounted scoreboards. You may simply unplug a portable scoreboard model and store it between games.

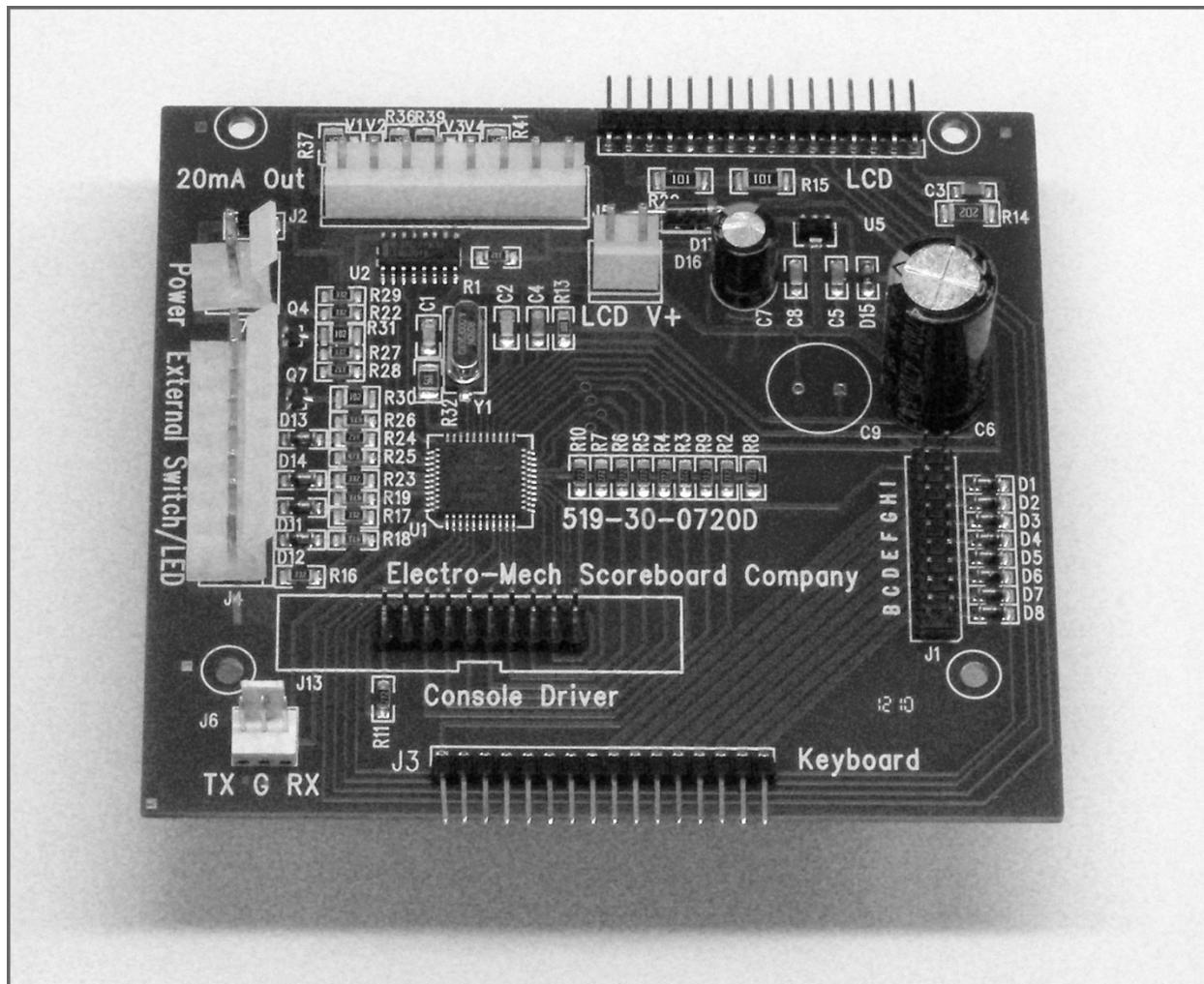
You should unplug your control console both from its power receptacle and from its data cable when you are not using it. Electro-Mech offers a carrying case that provides a convenient way to store and transport the console along with various cables and other accessories. Whether you have a case or not, you should store the console in a safe, dry location between games.

If the console loses connection with the scoreboard while the scoreboard is powered, the scoreboard will freeze up -- showing the last good Time, Score, and other information it received from the console. The scoreboard will synchronize with the console again as soon as you reestablish the connection.

If the scoreboard loses power with the console still connected and powered, nothing will happen other than the scoreboard display going blank. Again, the scoreboard will synchronize with the console as soon as it receives power.

If the console loses power -- either because you intentionally unplug it or because of something unexpected -- it will save the current game information to flash memory. When you next apply power to the console, the LCD will prompt you to restore the previous game. If you fail to respond to the prompt, the game data will restore automatically after a few seconds.

Jumper Settings



CX Driver

***** Important: If you plan to open up the console and do work inside the box, make sure the power cable is disconnected from the receptacle! *****

The PCB that is the heart of the CX console is called the CX driver. This driver contains a set of jumper pins that can be used to tell the software how to behave. By installing shunts across a pair of pins, you are, in essence, closing a switch that tells the program to do something. On some CX drivers these pins are labeled B through I, A through I, or A through J. On other drivers the A, B, C,... labels are missing, but you will find a corresponding diode next to pins B through I (A and J are not for jumpers). The diodes are labeled D8 through D1 (D8 = B, D7 = C, etc.).

Jumper pins A and J are used for attaching a programming cable to the CX driver and don't really do anything in this context. Pins F, G, H, and I are the "Board Type Jumpers" that determine the sport. So, for instance, by adding a shunt across the F pins, you can make your console think it is operating an Electro-Mech basketball scoreboard rather than a baseball scoreboard. This table summarizes the jumper settings for the Board Type Jumpers:

| Board Type | F | G | H | I | Models / Comments |
|-------------------|----------|----------|----------|----------|--|
| BASEBALL_3 | | | | | LX10xx, LX12xx, LX134x, MM-10x, MM-12x |
| BASEBALL_4 | | | | X | LX1360, MM-136 |
| FOOTBALL_4 | | | X | | LX1360, LX3150, MM-136 MM-335, MM-338 |
| BASEBALL_1 | | | X | X | LX10xx, LX11xx, LX12xx, LX134x |
| BASEBALL_2 | | X | | | Not used |
| SOCCER_LX | | X | | X | Not a part of CX_402 Software |
| SOCCER | | X | X | | Not a part of CX_402 Software |
| HOCKEY | | X | X | X | Not a part of CX_402 Software |
| LINESCORE4 | X | | | | 1440, 1480 |
| LINESCORE5 | X | | | X | LX14xx, LX16xx, LX17xx, 15xx, 17xx |
| FOOTBALL_1 | X | | X | | LX3xxx, 74xx, LX75xx, LX76xx, MP-3xx |
| BASKETBALL | X | | X | X | LX2xxx (except Player Stats), 72xx, MP-2xx |
| MP-14X | X | X | | | MP-140, MP-144, MP-148 |
| MP-15X | X | X | | X | MP-15x |
| MULTISPORT | X | X | X | | LX137x, LX1390 |
| HOCKEY_LX | X | X | X | X | Not a part of CX_402 Software |

Pins B, C, D, and E are the "Option Jumpers". Each one typically controls one of four options for a given Board Type. This document discusses the options for the BASEBALL_1 Board Type only. You'll have to look at the Owner's Handbooks for consoles configured for the other Board Types if you are curious about their Option Jumpers.

Jumper B = Scores to 19 (Install this jumper to have Scores to 19 instead of 99)
 Jumper C = 2-D Clock (Remove this to indicate a 4-D MM:SS Game Clock)
 Jumper D = Hours Clock (Install this to indicate a Clock with Hours -- H:MM)
 Jumper E = B-S-O to 4-3-3 (Install this jumper for Balls to 4, Strikes & Outs to 3)

Removing Jumper C indicates a MM:SS Game Clock as found in Models LX1064, LX1138, LX1164, LX1168, and LX1244. This would create an incompatibility with Models LX1062, LX1132, LX1136, LX1162, LX1166, and LX1340. Other models would be unaffected by this change.

Adding Jumper D indicates a H:MM Game Clock as found in Models LX1131, LX1135, LX1161, LX1165, LX1241, and LX1341. This would create an incompatibility with Models LX1062, LX1132, LX1136, LX1162, LX1166, and LX1340. Other models would be unaffected by this change.

Models LX1240, LX1250, and LX1260 can be made to show the Ball, Strike, and Out Counts to 4, 3, and 3 by adding E Jumper to this console.